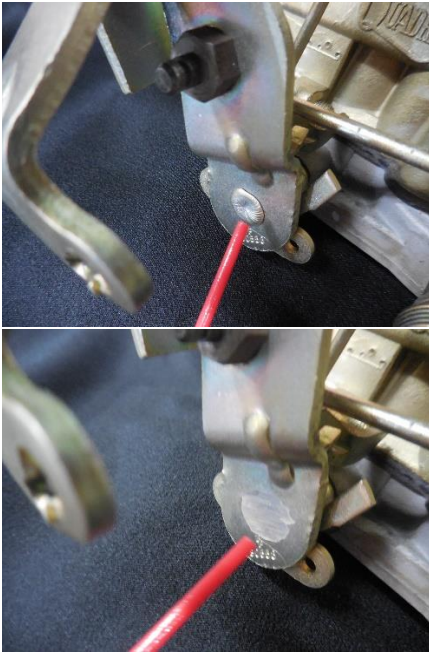


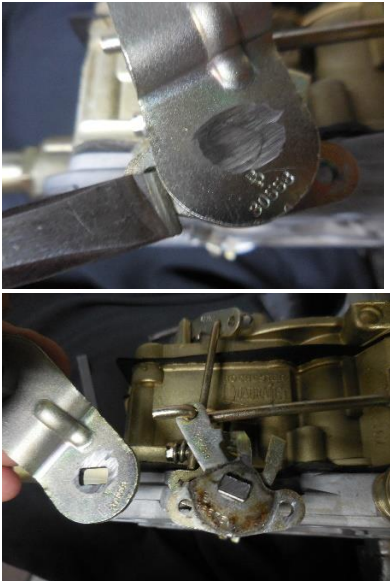


QUADRAJET TV ARM CONVERSION KIT INSTRUCTIONS (copyright 2016)

1. Grind the rolled end off the primary throttle shaft at the throttle arm.



2. Remove the throttle arm. (You can heat it and use a thin chisel to pry it)



3. Remove the next piece off the throttle shaft, leaving the V shaped secondary actuating arms fully exposed.



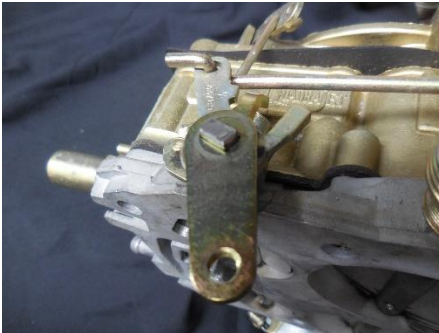
4. Use a file to clean up the end of the throttle shaft, removing any burrs and lightly chamfering the sharp edges.



5. Position the new TV arm with its "finger" in between the V shaped secondary actuating arms.



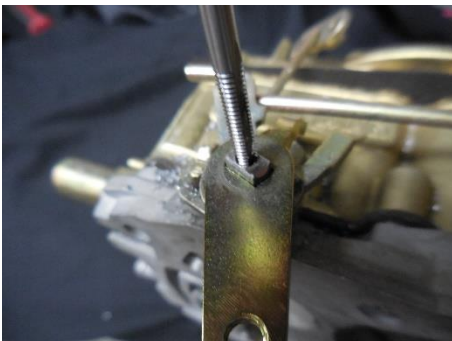
6. It's supposed to be a tight fit - use a file where needed to get the TV arm to start on the shaft, then use a socket and hammer to lightly tap it all the way back against the secondary actuating arms.



7. Centerpunch the throttle shaft lightly, just enough to get a drill bit started.



8. Drill the throttle shaft out to 9/64", about 3/8" deep then tap #8-32.



9. Using Loctite, install the TV stud through the 1/4"-20 nut and into the new TV arm, tight. (Olds, leave out the nut).
10. Reinstall your throttle arm, lightly tapping it on with a hammer.



11. Weld the throttle arm to the shaft for a permanent installation (recommended), OR apply Loctite to the #8-32 flange head screw, and install it in the end of the throttle shaft, tight.



Oldsmobile: bend the return spring arm out as needed to clear TV cable end.



12. Check throttle arms and linkages for proper operation and adjust as necessary.

Need assistance? Contact us at:

ken@everyday-performance.com

(860) 218-5780